



Health and Wellbeing Board

March 2017



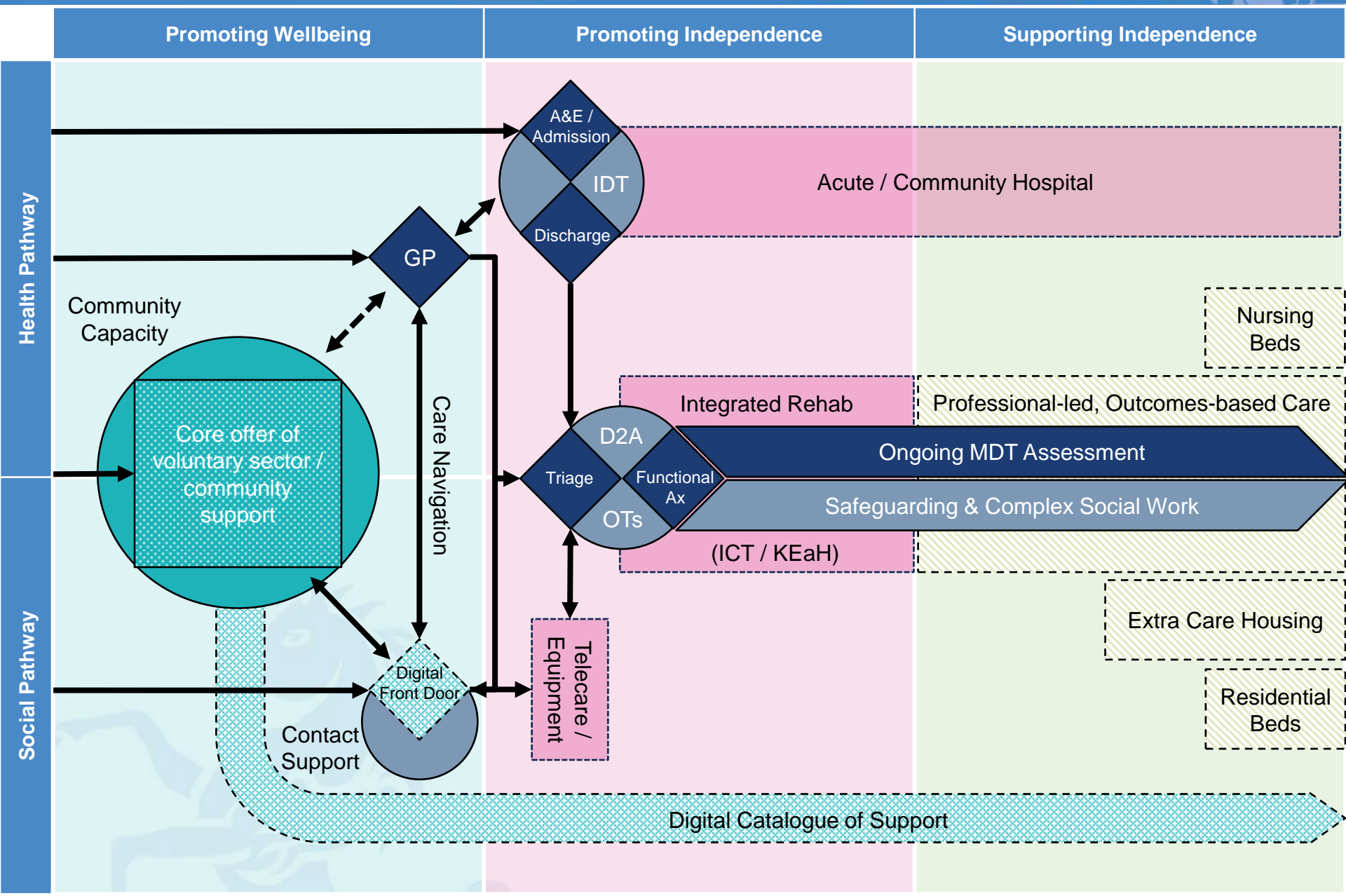
Key Commissioning Challenges



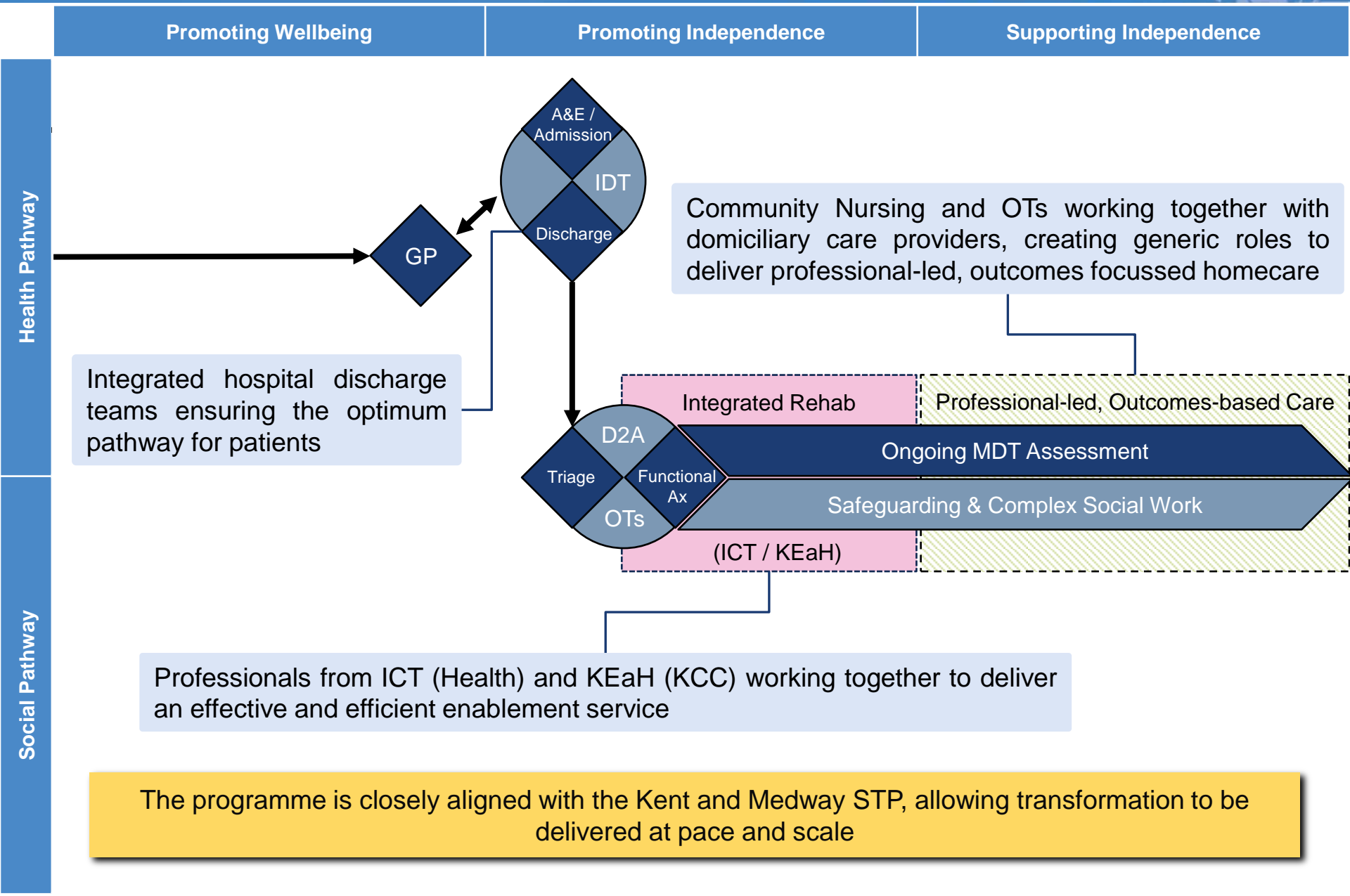
1. The care provider market is unstable – the current model is reactive and cannot sustain rising demand and increased pressure on supply
2. By making best use of the skill sets of both health and social care professionals, and aligning processes, systems and structures, better outcomes can be achieved for individuals and duplication and inefficiency can be reduced
3. If properly supported, the voluntary and community sector can do more to meet the needs of individuals
4. With the right capacity and processes, more people could be supported to live in alternatives to residential and nursing care



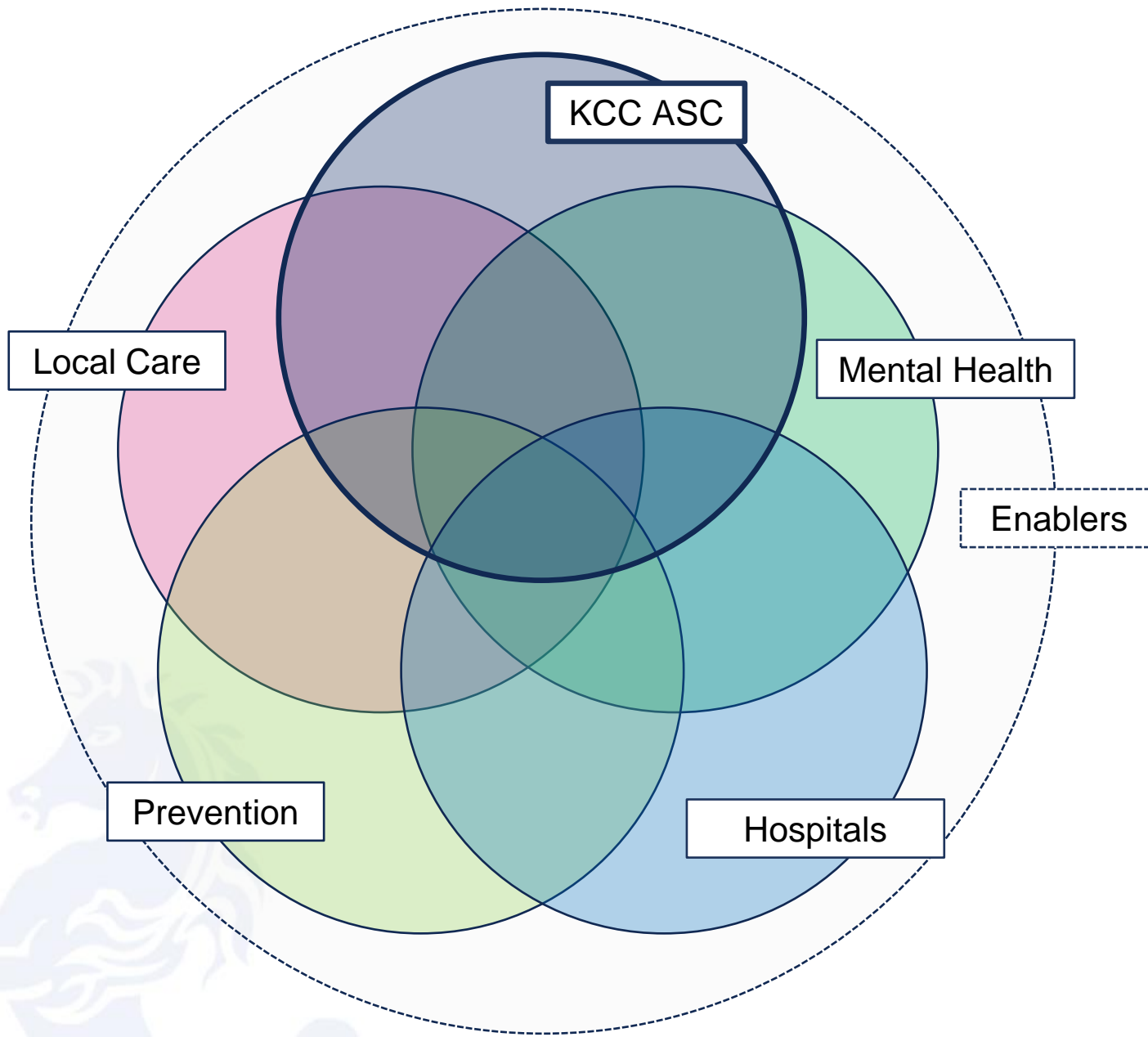
KCC are designing a new operating model



Which requires close collaboration with our health partners



This programme will design and test components of the STP workstreams

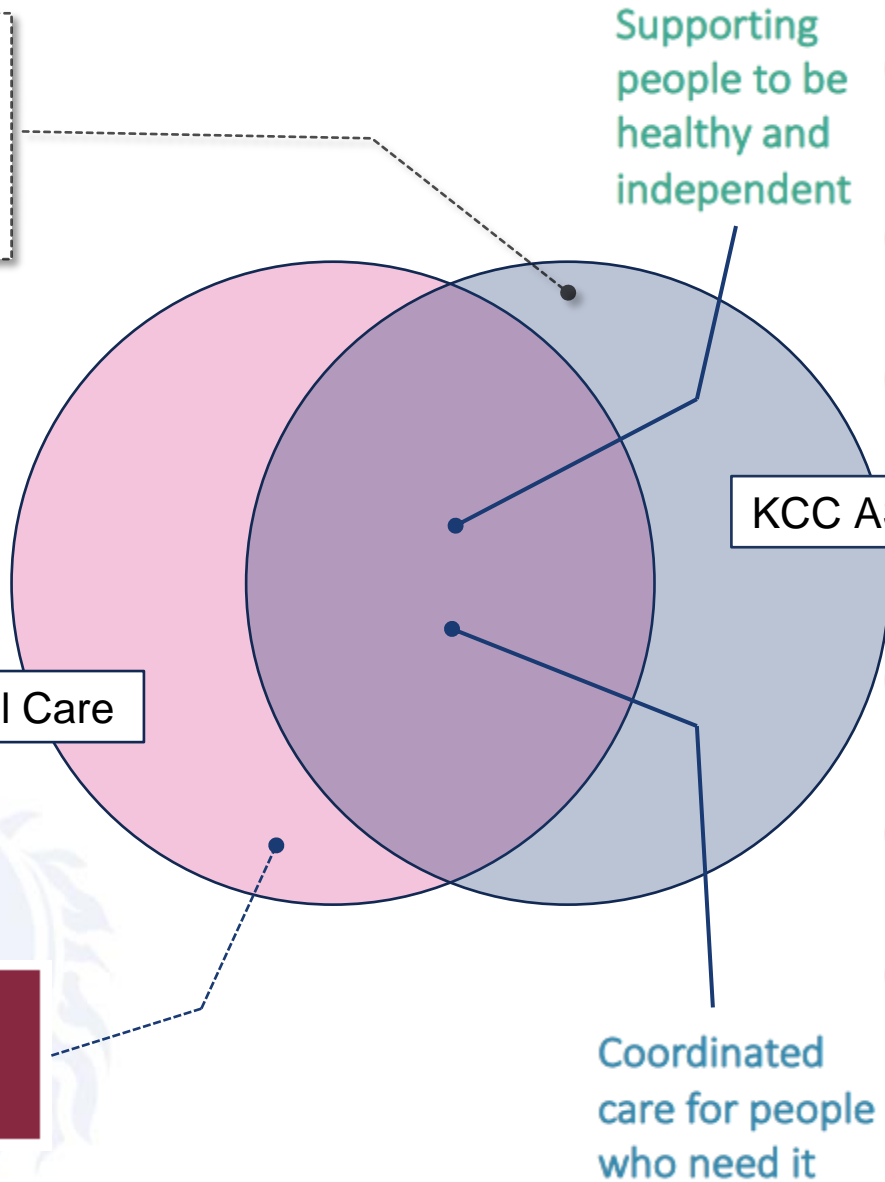


And most closely aligns with Local Care



- Single point of access for voluntary and preventative support
- Promoting alternative accommodation

There is considerable overlap between the two, though the full scopes are different



- 1 Care and support planning with care navigation and case management
- 2 Self-care and management
- 3 Healthy living environment

- 4 Integrated health and social care in or coordinated close to the home
- 5 Single point of access
- 6 Rapid Response
- 7 Discharge planning and reablement

- 8 Access to expert opinion and timely access to diagnostics

Making a significant contribution to the overall model



Supporting people to be healthy and independent

1 Care and support planning with care navigation and case management

Pilot
Supporting Independence: Professional-led, outcomes-based homecare



2 Self-care and management

Promoting Wellbeing: Core offer, digital offer / self assessment



3 Healthy living environment

Promoting Wellbeing: Core offer



4 Integrated health and social care into or coordinated close to the home

Supporting Independence: Professional-led, Outcomes-Based Homecare



Coordinated care for people who need it

5 Single point of access

Promoting Wellbeing: Front door / triage



6 Rapid Response

Promoting Independence: Discharge to assess / functional assessment



7 Discharge planning and reablement

Promoting Independence: Integrated rehab



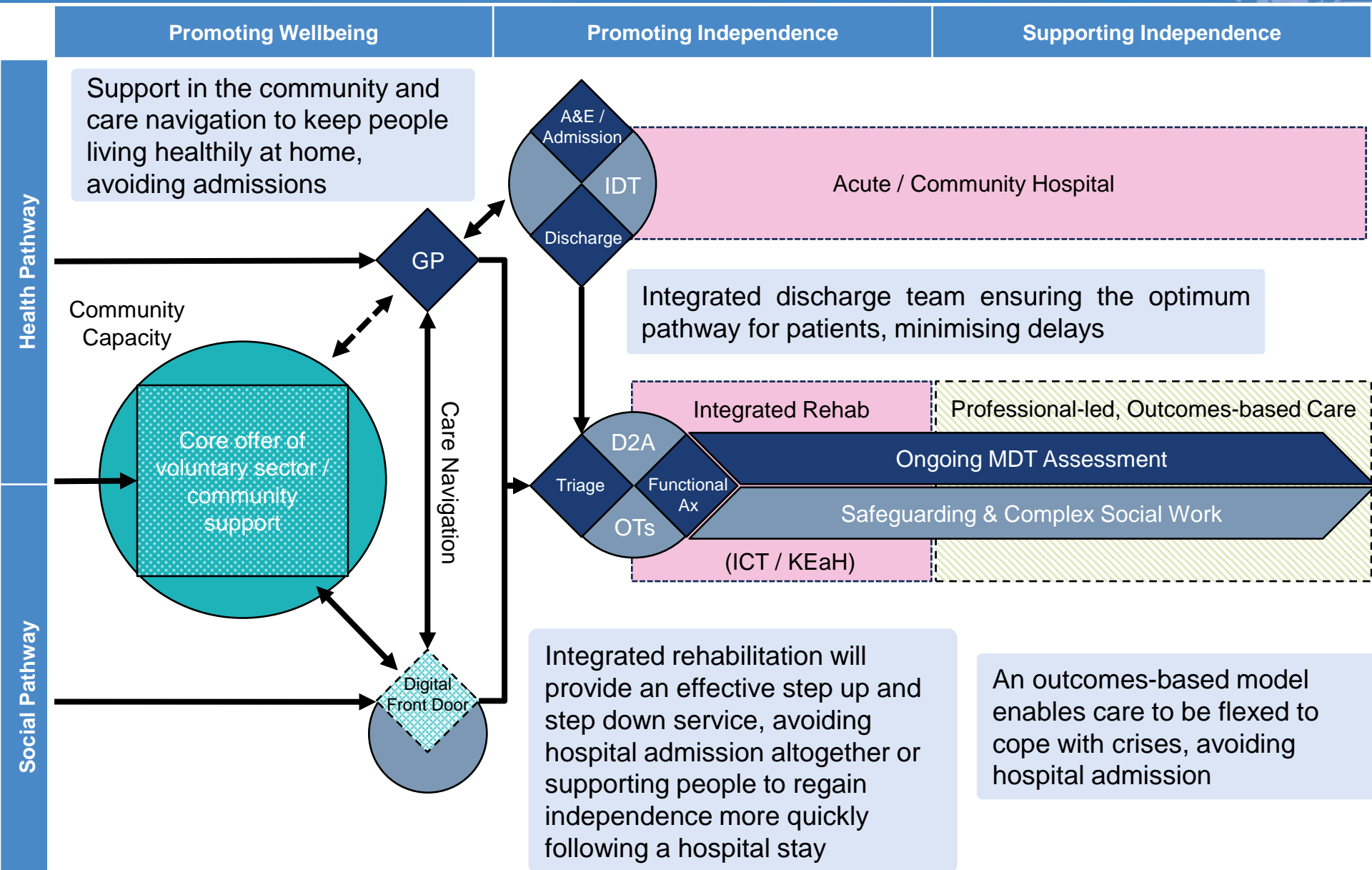
Supporting services

8 Access to expert opinion and timely access to diagnostics

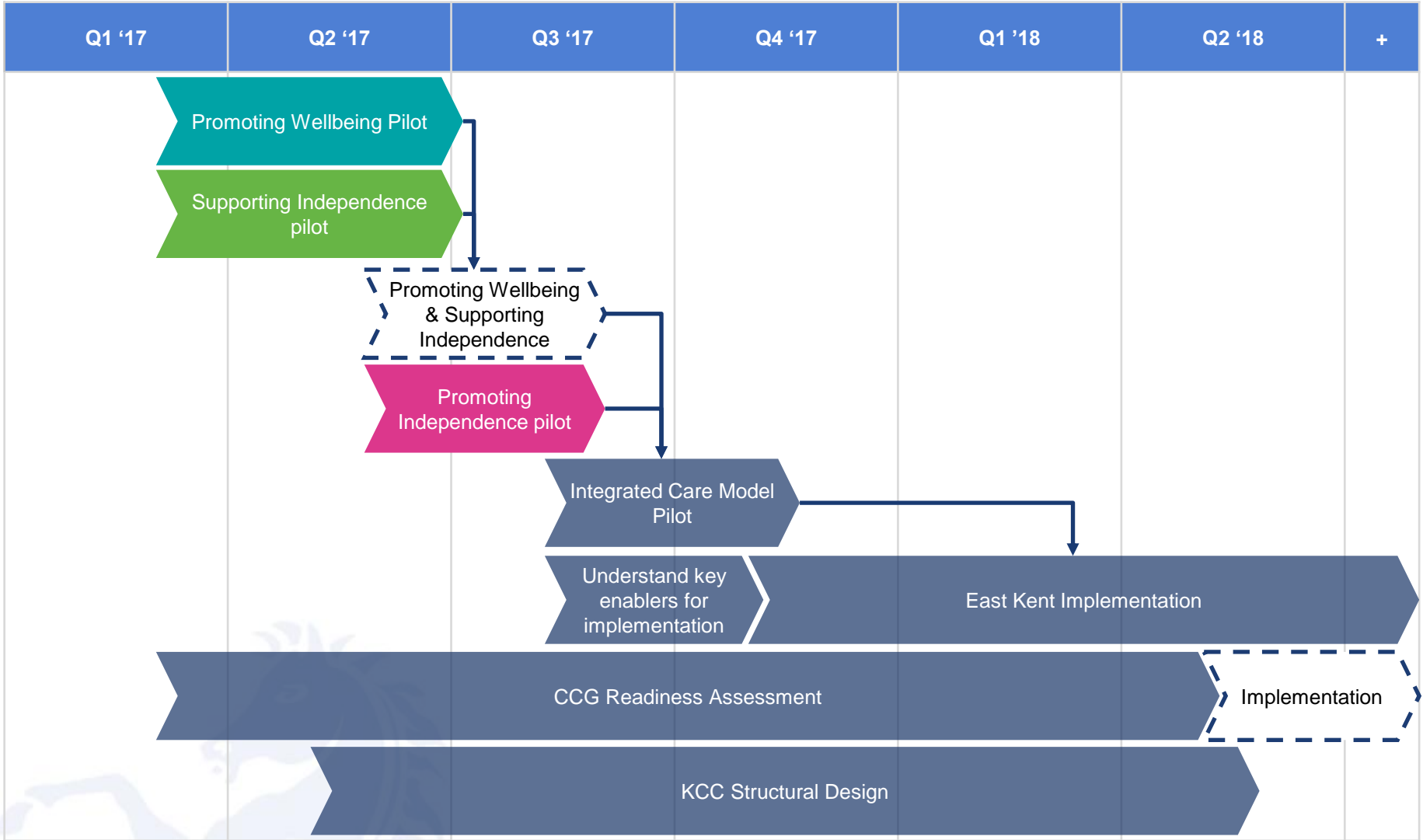
N/A



And supporting the delivery of capacity in the Acute Hospitals



The whole model will be piloted in East Kent and then implemented across the county



Pilots will demonstrate and measure the benefits to the Health and Social Care economy and direct detailed design of the new operating model. Implementation will require clear understanding of all enablers, such as workforce, estates, digital etc.